



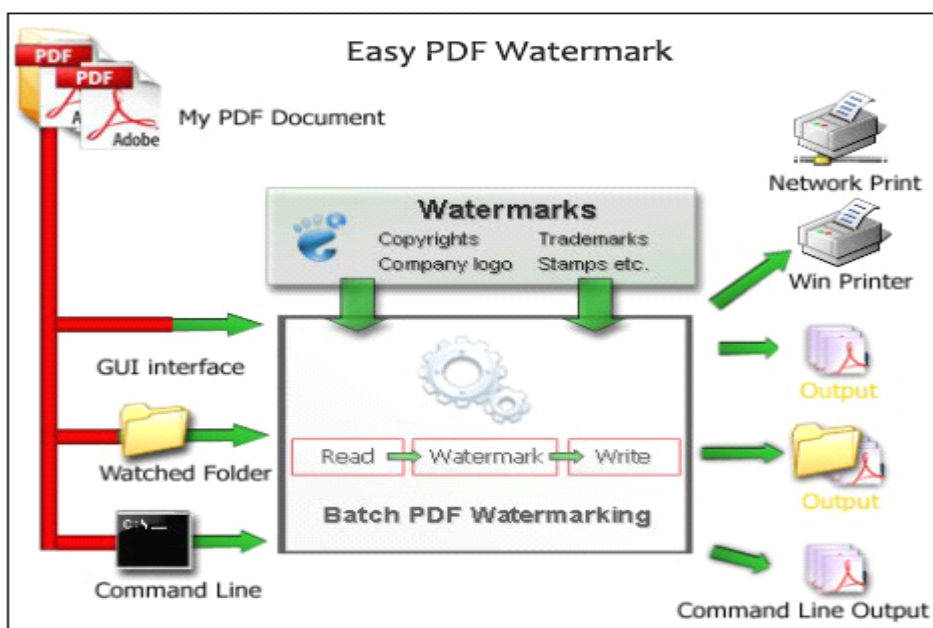
Note: This product is distributed on a 'try-before-you-buy' basis. All features described in this documentation are enabled. The registered version does not insert a watermark in your generated PDF documents.

1 About Easy PDF Watermark

Easy PDF Watermark is an advanced but easy-to-use desktop program, it help to add visual image or text watermarks (such as DRAFT, CONFIDENTIAL, even your company's name and logo) to either a single Acrobat PDF file or a batch of files. Software provides multiple options to create watermarks to mark documents as your copyrighted property in a few steps. More functions like print, mail and FTP settings are included. Easy PDF Watermark also supports to show watermark only when printing, and hide when viewing.

With Easy PDF Watermark, you can create, edit and manage the text, image, shape, PDF watermark. Text watermark support either static or dynamic text, with dynamic text, you can use PDF file name, metadata information, and date time as the watermark. Image watermark supports almost all of image formats includes TIFF, JPEG, JPEG 2000, GIF, BMP, PNG, ICO, WMF, EMF etc. You can create watermark using company logos, letter header, signatures, product pictures or any artwork in image formats.

Functional diagram:





2 Functions and Features

- To customize **visual watermarks** and stamp on PDF files.
- Enable to **batch** add watermarks to a large number of PDF files with ease.
- **5 types** of watermarks are available, including text, image, PDF, shape and Dynamic Datetime.
- Customize watermark styles like size, opacity, margins and position.
- Supports work with **command line** and **hot directory**.
- Allows to watermark all pages or only specific pages range like odd/even pages.
- More practical options like security, print, email and FTP are available as well.
- Supports drag and drop to add PDF file for watermark.
- Import & export watermark for re-usage.
- Various built-in templates are selectable to add watermark quickly.
- With real-time preview, to design watermark intuitively.
- Supports directly email output file, deliver to FTP server or print after watermarking.
- Software compatible with Windows 98/2000/ME/XP/2003/Vista/7.
- Intuitive interface and simple operation.
- Affordable, free trial and upgrade.



Easy PDF Watermark does NOT require Adobe Acrobat, and produces documents compatible with Adobe Acrobat Reader Version 5 and above.

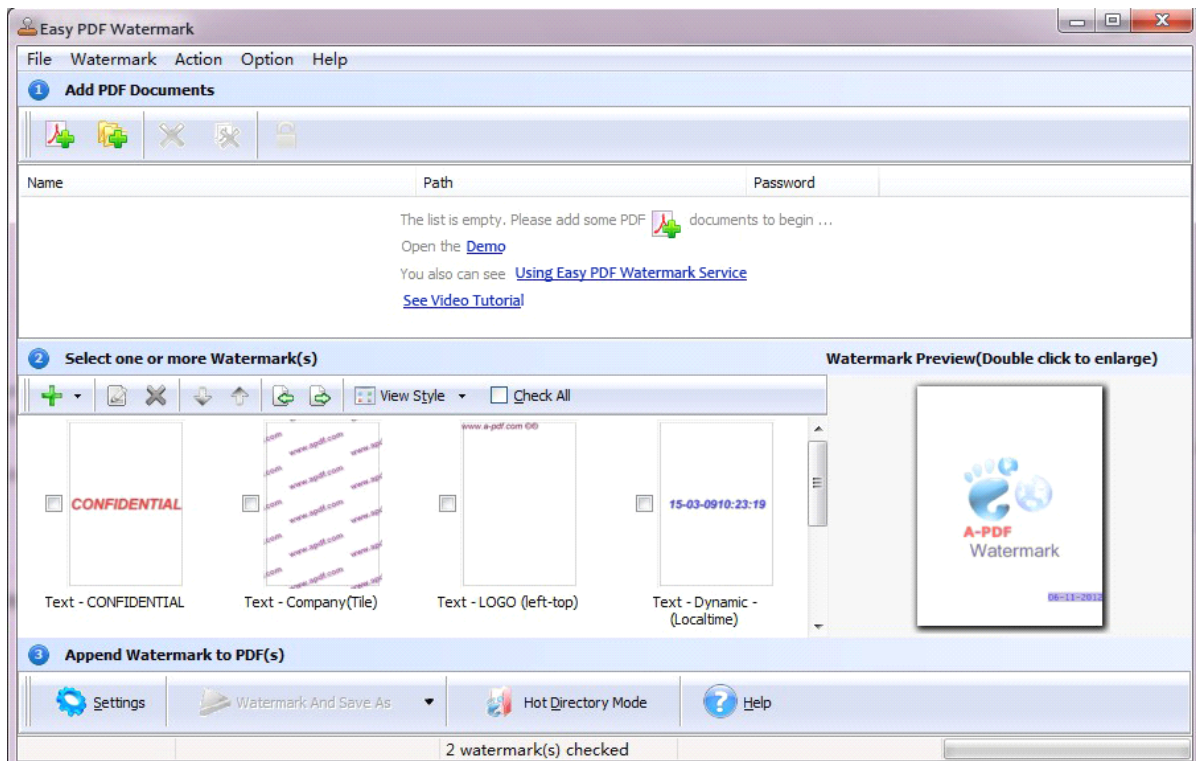


3 Using Easy PDF Watermark


Under Windows Operation System, Easy PDF Watermark can be started either via the desktop shortcut, or directly from Windows explorer.

When you start the program, if you haven't registered our product, you will be informed to purchase the full version.

Then you will be presented with the primary screen.




Add documents

Click the  icon in toolbar will open the standard file browse and select window, where you can browse the folders and find the PDF file you want to stamp. Alternatively you can open the "**File**" menu and select "Add PDF Document" to add PDF file.

If you are using Windows Explorer to locate files, you have the convenience of being able to '**drag and drop**' files into the document window to add PDF file.

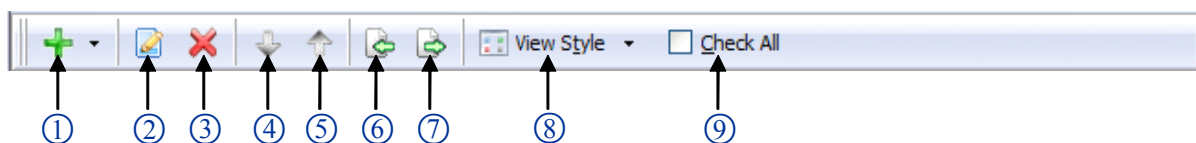
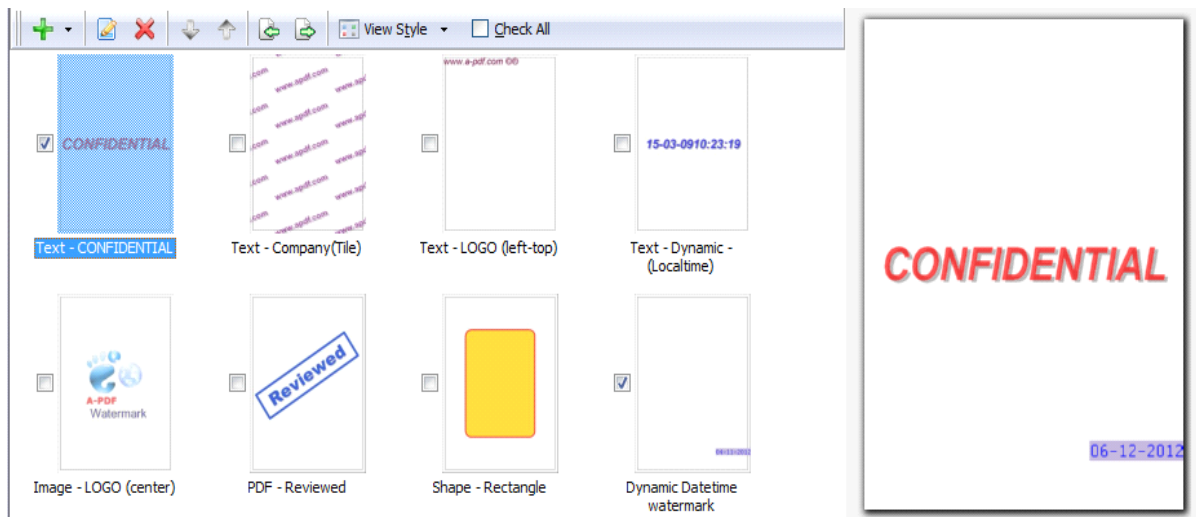


Easy PDF Watermark even allows you to select all files in a particular directory/folder by either using the **Add a Directory** option from the File menu or click the  icon! Add a directory also supports sub-folders.

Create Watermark

Easy PDF Watermark provides multiple watermark templates, which can be selected and modified. Also software allows you to build five types of watermarks, including text, image, PDF, shape and Dynamic Datetime. Its flexible features enable you to design your own watermark easily.

Multiple templates




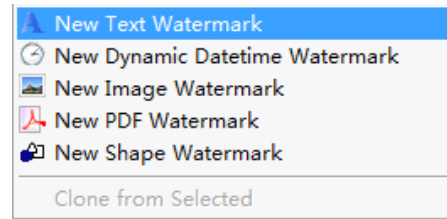
1. Add new watermark: New Text Watermark, New Dynamic Datetime Watermark, New Image Watermark, New PDF Watermark, New Shape Watermark.
2. Modify selected watermark
3. Delete selected watermark
4. Move down
5. Move up
6. Import watermark
7. Export watermark
8. View style: List or Thumbnail
9. Check All: Select all the watermark in watermark list.



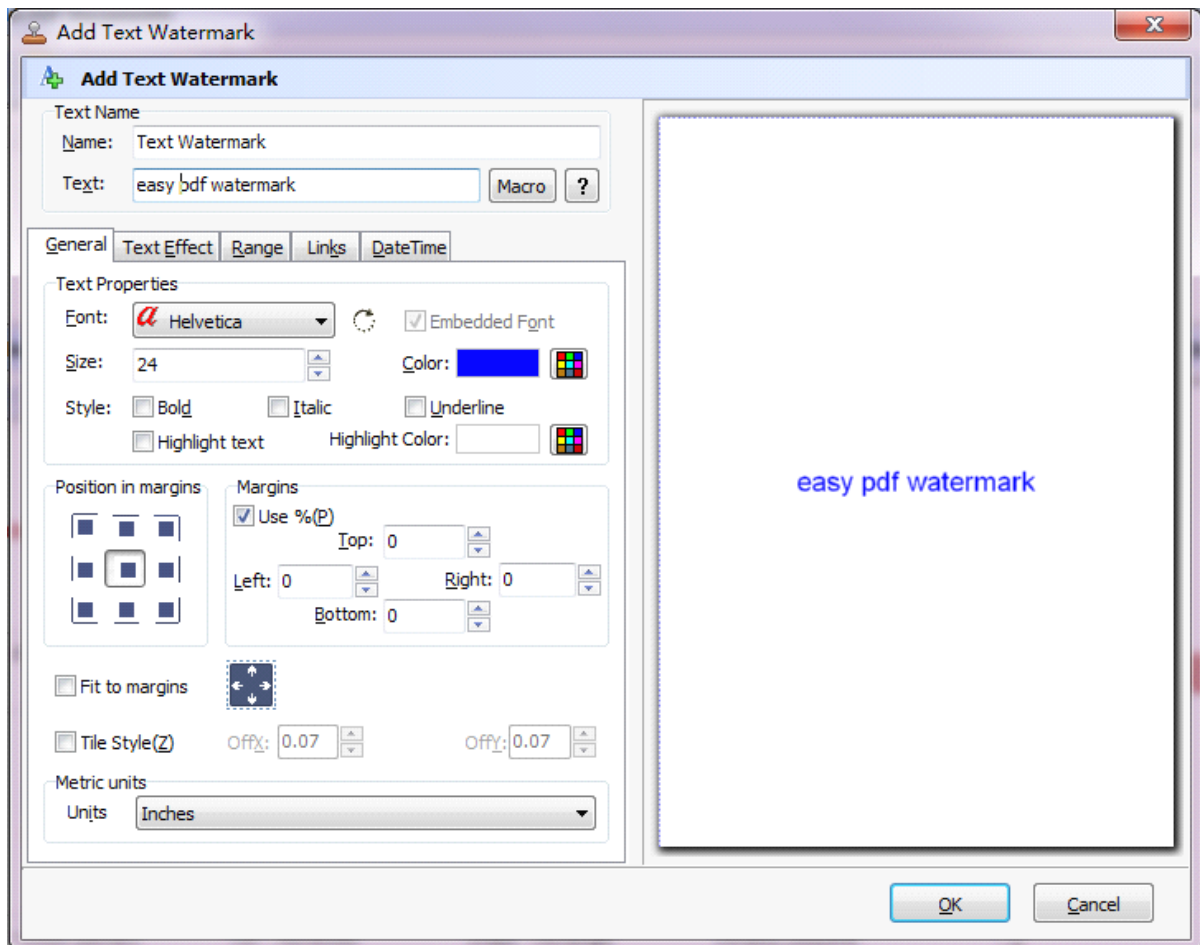
Add and Edit Watermark

Easy PDF Watermark allows to create 5 types of watermarks, including text, image, PDF, shape and Dynamic Datetime. You

can click  button, then select from the pop-up menu.



Create Text Watermark



In Add Text Watermark configuration window. You can configure the text watermark properties here. Once you set the desired options for the text watermark, you can click **OK** to save it, Options that you can set:

Name - you can enter a name for the watermark (note this is not the text that will appear in the PDF, it's used only in the list of available watermarks that you see on the Watermarks list and must be a unique name).



Text - the text you enter here is actually the text that will appear as the PDF watermark. You can use macro to specify dynamic text, either select from the Macro list or input directly. As you type you will see in the Preview section how the watermark looks.

Text properties - You can select the type of the font (in the Font section), color, style (bold, italic, underline) and size of the text. If the font is true type, you have choice to embed the font or not.

Text Layout - If the **Fit to margins** options is selected the size of the font will be automatically adjusted to fit in the limits of the page margins. If the **As background** option is not checked, the text watermark will be placed on top of the content that currently exists in the document, otherwise it will be placed under the existing content. You can place the text to a fix position or tile in pages by check or uncheck **Tile style** option. **Offx** means x-offset, **Offy** means y-offset. **Position** and **Margin** helps you to adjust the position of text watermark. The margin can use either inch/millimeter or percent as unit.

Text Effect - In Text Effect tab, you can choose a rotation angle if you want the text to be rotated (Rotation, values accepted between 0 and 360) and set an Opacity value so that the text is transparence (values from 0 to 100). 0 means invisible, 100 means visible solid.

You can set a text shadow properties, properties including:

Opacity: To set the text shadow transparence, transparence (values from 0 to 100). 0 means invisible, 100 means visible solid.

Color: text shadow color, to set the color of the shadow, default color is gray.

Angle: To set the angle of the shadow.

Distance: To set the distance of the shadow from the object.

Range - Set pages to be added current watermarks on by selecting a predefined range. It applies to current watermark only.

Preview - in this section you will be able to see how the text watermark will be displayed in the PDF file. Now the text watermark has been defined and saved, it will be shown in the Watermarks list window.

Link - allow you to add link to current watermark, the link action include URL, Go to page and go to remote PDF page type link.

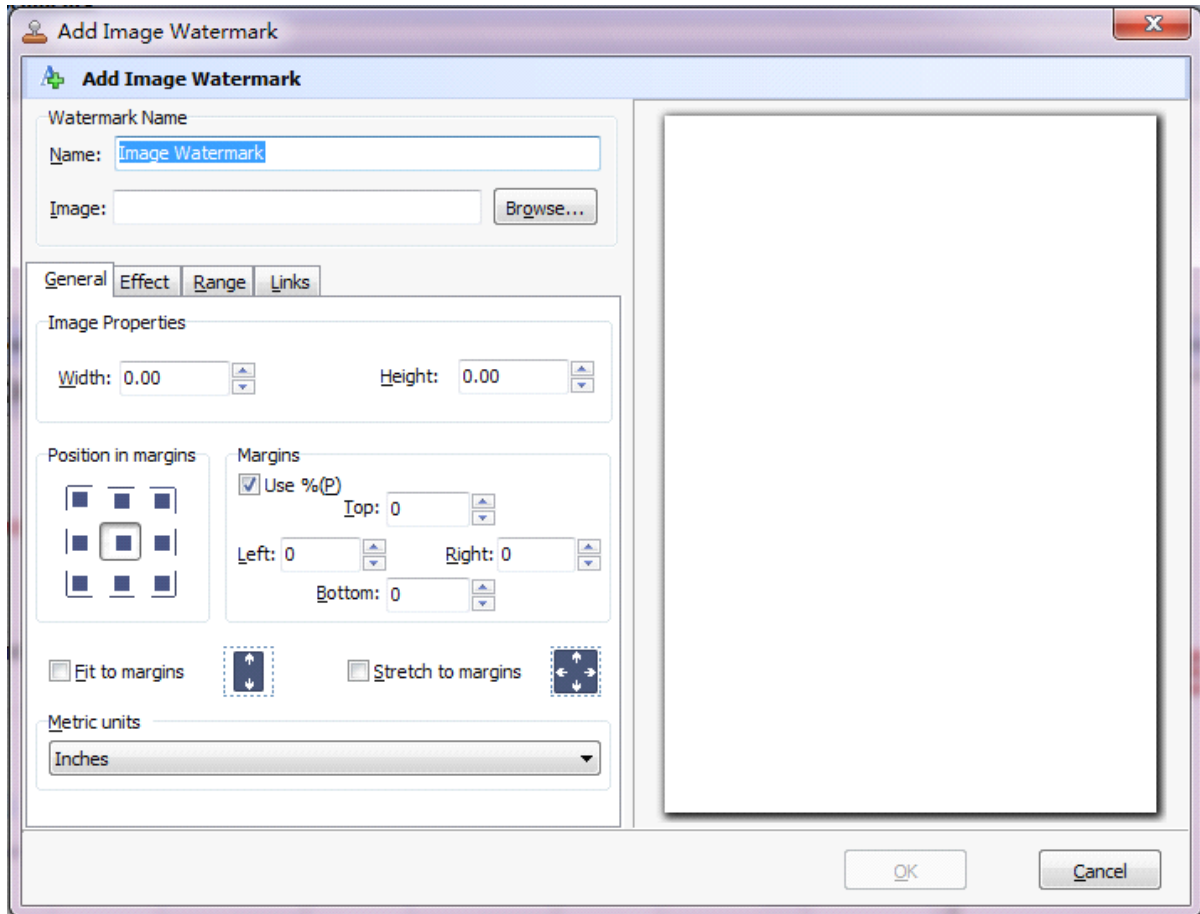
URL type Link: the link can be Web URL (such as “<http://www.easy-pdf-tools.com>”); can be Email (such as “mailto: tech@easy-pdf-tools.com”); can be FTP;

Go to PDF page type link: the link can navigate you to the special page number in the current PDF.

Go to Remote PDF page type link: the link can navigate you to the special page number from outside PDF file.



Create Image Watermark



In here you can configure the image watermark properties. Once you set the desired options for the image watermark, you can click **OK** to save it.

Options that you can set:

Name - you can enter a name for the image watermark.

Image - You can browse and choose an image that will be used as the watermark. Image formats that can be recognized: .BMP, .GIF, .ICO, .JPG, .TIF, .JPEG, .JPE, .PBM, .PCX, .PNG, .PPM, .PSD, .TGA, .TGA etc. After you click ok you will see it in the Preview section.

Image properties and margins - by default the **Fit to margin** are checked. The **Fit to margins** option will adjust automatically the image to fit in the limits of the page margins. If you uncheck the **Fit to margins** option you can enter custom dimensions for your image (units for the dimensions are those selected in the **Units** drop-down includes inches, millimeters or points) and the image will be automatically adjusted as seen in the **Preview** section. The **Stretch to margins** option will adjust automatically the image to stretch in the limits of the page margins



Image Effect - Using options in this section you can choose a rotation angle if you want the image to be rotated (Rotation, values accepted between 0 and 360) or set an Opacity value so that the image is not fully visible (values from 0 to 100).

Transparent color: If you check the transparent color option you can select a specific color from your image to be transparent when the image watermark is added to the PDF file.

Range: Set pages to be added current watermarks on by selecting a predefined range.

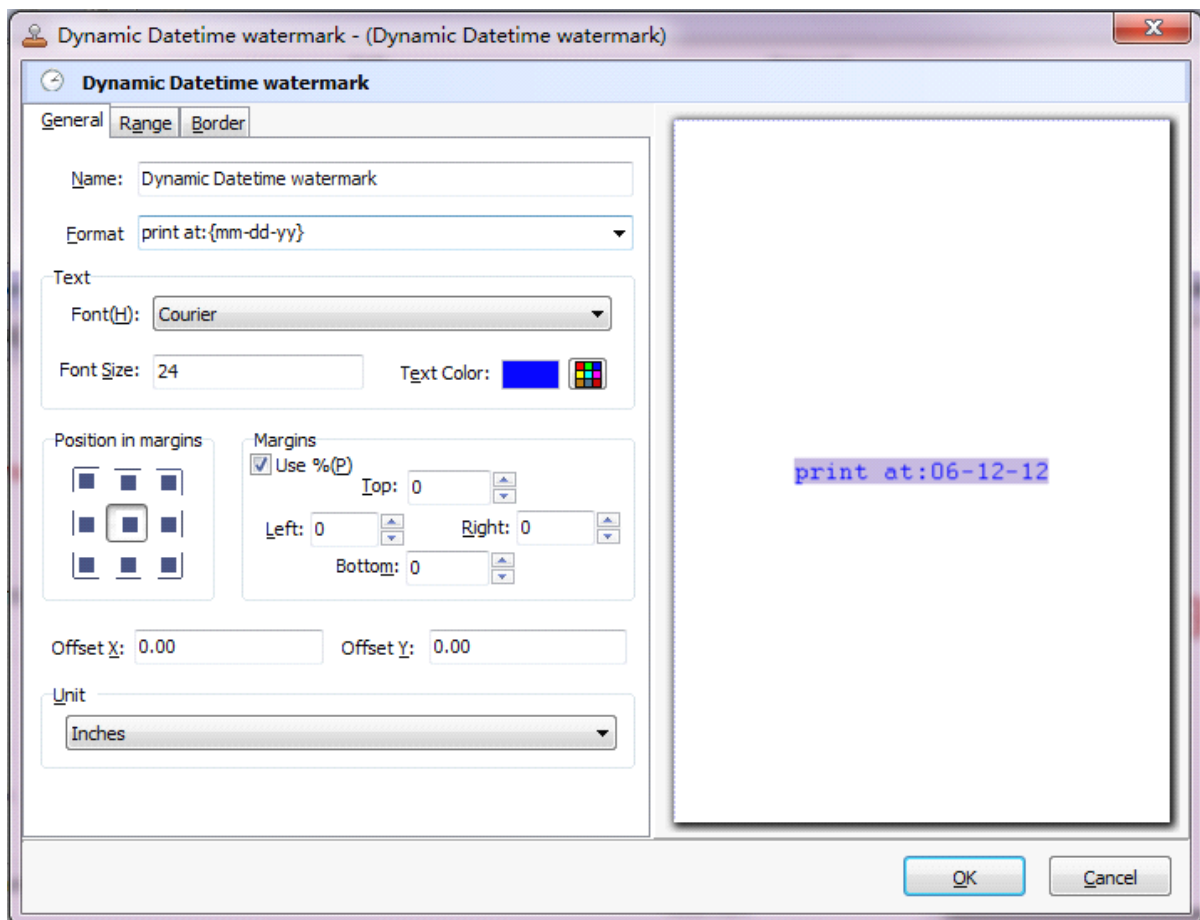
It applies to current watermark only

Preview - in this section you will be able to see how the image watermark will be displayed in the PDF file.

Link: see description for text watermark link above

Now the image watermark has been defined and saved. It will be shown in the Watermarks list window.

Create Dynamic Datetime Watermark





In here you can create a Dynamic Datetime watermark. With the Watermark, you can add the live date/time to the document. Once you set the desired options for the Dynamic Datetime watermark, you can click **OK** to save it.

Options that you can set:

Name - you can enter a name for the watermark.

Format - You can choose a Dynamic Date time format for watermark, such as {mmdd-yy}, {mm-dd-yyyy}, {HH:MM} etc... } X,Y - The layout (X,Y position in the margin) for watermark

Text - You can select the type of the font (in the Font section), color and size of the Dynamic Datetime watermark.

Margins - Custom Position and dimensions for your Dynamic Datetime watermark (units for the dimensions are those selected in the Units drop-down includes inches, millimeters or points) and the Dynamic Datetime Text will be automatically adjusted as seen in the Preview section.

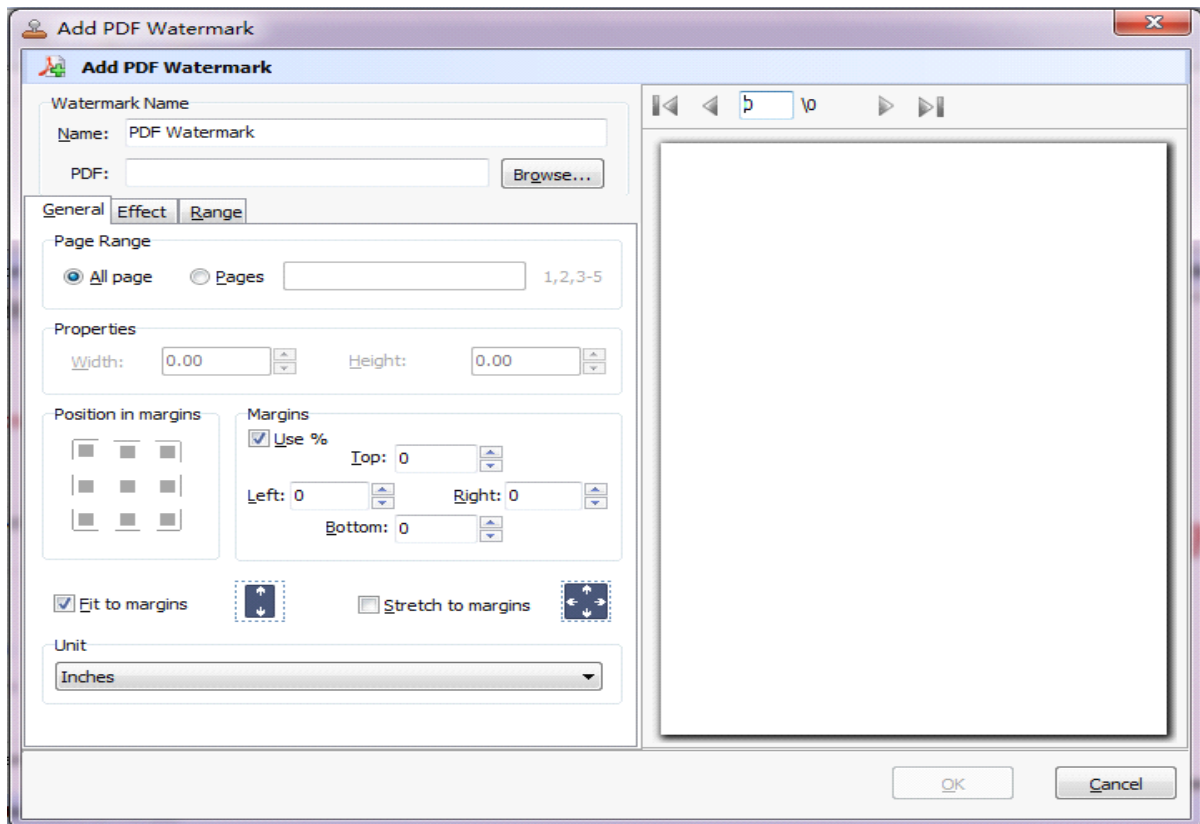
Range: Set pages to be added current Dynamic Datetime watermarks on by selecting a predefined range. It applies to current watermark only.

Border: In the Border Tab, You can select a fill color and/or border line type for the Dynamic Datetime watermark.

Now the shape watermark has been defined and saved, it will be shown in the Watermarks list window.



Create PDF Watermark



In here you can create watermark from PDF. Once you set the desired options for the PDF watermark, you can click OK to save it.

Options that you can set:

Name - you can enter a name for the PDF watermark.

PDF - You can browse and choose a PDF document that will be used. After you click **Ok** you will see it in the Preview section.

PDF properties and margins - by default the **Fit to margin** are checked. The Fit to margins option will adjust automatically the PDF Content to fit in the limits of the page margins. If you uncheck the Fit to margins option you can enter custom dimensions for your PDF Content (units for the dimensions are those selected in the **Units** drop-down includes inches, millimeters or points) and the image will be automatically adjusted as seen in the **Preview** section. The **Stretch to margins** option will adjust automatically the PDF Content to stretch in the limits of the page margins

Page Range - in this section you will be able to decide which PDF Page will be stetted as pdf watermark

Image Effect - Using options in this section you can choose set an Opacity value so that the PDF

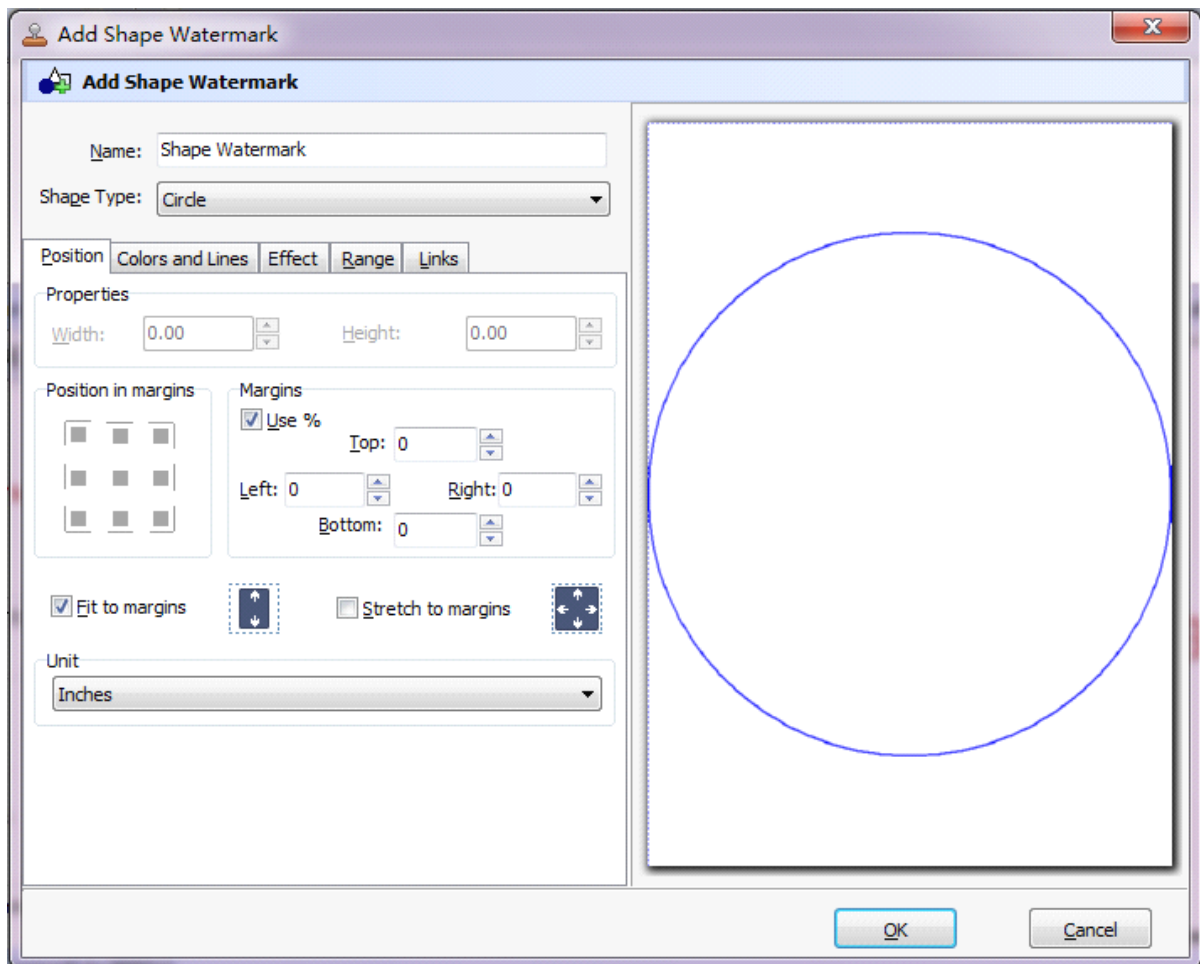


watermark is transperance (values from 0 to 100). 0 means invisible, 100 means visible solid. If the As background option is not checked, the PDF watermark will be placed on top of the content that currently exists in the document, otherwise it will be placed under the existing content

Range: Set pages to be added current watermarks on by selecting a predefined range.It applies to current watermark only

Preview - in this section you will be able to see how the PDF watermark will be displayed in the PDF file.

Create Shape Watermark



You can configure the shape style watermark properties here. Once you set the desired options for the shape watermark, you can click **OK** to save it, Options that you can set:

Name - you can enter a name for the watermark (note this is not the text that will appear in the PDF, it's used only in the list of available watermarks that you see on the Watermarks list and must be a unique



name).

Shape Type - To set the Shape Watermark Type, including Lines watermark, Rectangle Watermark, Circle Watermark.

Shape Watermark properties - You can set the size(width or height) of the shape watermark, If the Fit to margins options is selected the size of the shape watermark will be automatically adjusted to fit in the limits of the page margins.

Shape Watermark Effects - you can choose a rotation angle if you want the shape to be rotated (Rotation, values accepted between 0 and 360) and set an Opacity value so that the shape is transparence (values from 0 to 100). 0 means invisible, 100 means visible solid. If the As background option is not checked, the shape watermark will be placed on top of the content that currently exists in the document, otherwise it will be placed under the existing content.

Shape layout -You can place the shape to a fix position, Position and Margin helps you to adjust the position of Shape watermark. The margin can use either inch/millimeter or percent as unit.

Range: Set pages to be added current watermarks on by selecting a predefined range.It applies to current watermark only.

Preview - in this section you will be able to see how the shape watermark will be displayed in the PDF file.

Link: see description for text watermark link above Colors and Lines formatting Tab.In the Format Color and Lines dialog box, select a new color and/or line type for the shape.



Hot Directories Mode

You may want to monitor a directory in a server, when some one copying the PDF files in, the watermark will be added to PDF and sent to an output directory automatically. In Easy PDF Watermark main window, click the **Hot Directories Mode** button , a Hot Directories Service window will be opened.

Hot Directory Setting

Monitored Directory:

Include Sub-Directory

Output Directory:

Log File Directory:

Backup Directory

Note: Files in [Monitored Directory] will be moved to the [Backup Directory] when the option checked.

Watermark Preview:

CONFIDENTIAL

Monitor Stopped!

Hot Directory Setting:

Monitor Directory- set the directory to monitor. Even Include Sub-Directory.

Output Directory- set output directory where all of converted files will be sent to.

Log File Directory- Log files will be saved in. Log files will record the detail of operation. Such as when to monitor, which file converted, if converting successfully or not.

After setting the directories, click **Start** button to start work, **Stop** button to stop monitoring hot directory.



Command line

Command line which works as Windows console utility is included to support insert pre-generated watermark to PDF files.

usage:

```
PWMCMD.exe <input file> [-S<password>]
                <watermark name|watermark file> [-O<Output File Name>]
```

Return code:

- 0: Success
- 2: Input file does not exist
- 3: Load Input file failed
- 4: Output file error
- 5: Some watermark not found
- 6: No watermark list
- 7: Create Output file failed
- 8: Load watermark list fail

Example:

1. PWMCMD c:\pdfs\doc.pdf "Text - FINAL"
2. PWMCMD c:\pdfs\doc.pdf "FINAL" "Com Logo" -O"c:\pdfs\out.pdf"
3. PWMCMD "c:\pdfs\doc.pdf" "C:\Watermark\doMark.wm"

-o"c:\pdfs\out.pdf"

MEMO: "Text - FINAL" is a watermark item defined by A-PDF
Watermark GUI(PDFWM.exe), you can display all watermark
items by Using Command: PWMCmd.exe -list

4 Ending Your Session

When you have completed your work , then choose the "**Exit**" option to exit program.

For more information: www.easy-pdf-tools.com